

# Industrial Grade Satellite Tracker Installation Guide

**Note:** This device is **certified Intrinsically Safe**.

## Before You Begin

- ClearPathGPS highly recommends using mounting hardware made from a higher-grade series stainless steel. Other mounting hardware material types may be subject to shortened life due to corrosion.
- Ensure all mounting hardware is compatible with the asset.
- Ensure all regulatory compliance and asset owner policies and procedures are adhered to during installation.
- When using stainless steel mounting hardware, it is highly recommended to use a marine-grade anti-seize material on the bolt threads as galling and seizing of stainless nuts and stainless bolts may occur.
- Using smaller bolt sizes (5/16" or 8mm) is possible but not recommended since they will not provide equivalent mounting strength.
- To avoid staining and discoloration, zinc-coated mounting hardware should not be used with the metal bezel.
- Failure to follow mounting and installation instructions accordingly may result in damage to the device or asset and persons or property. ClearPathGPS is not liable for damages or injuries caused by improper installation.

## Installation Overview

The following steps provide an overview of the installation process:

1. Selecting a Mounting Location.
2. Selecting a Mounting Method.
3. Assign to the Asset.
4. Initialize the Device.

### 1. Selecting a Mounting Location.

To ensure ideal performance, please consider the following:

- Select a mounting location that provides the best view of the sky yet protects the device from damage
- A flat, hard, horizontal mounting position (lying flat, facing skyward) is preferred; vertical mounting orientations are acceptable but may impact performance and overall battery life



1. Thoroughly clean the mounting area of 5.0" L x 3.5" W (130 mm x 90 mm).

**Note:** Do **NOT** paint or cover the device. Doing so may negatively impact product performance and battery life.

## 2. Selecting a Mounting Method.

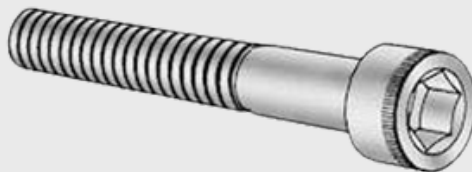
### MECHANICAL MOUNTING (RECOMMENDED)

**Note:** All mounting hardware recommendations can be found at [www.mcmaster.com](http://www.mcmaster.com)

#### Socket-Head Cap Screws (3/8" bolt diameter)

Used for installations that can be drilled and tapped, and do not require access to the back side of the mounting surface.

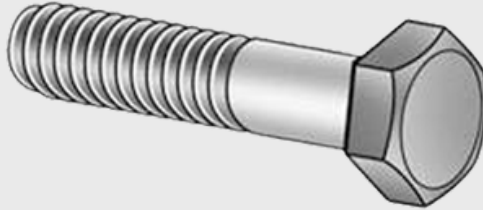
- Option 1 - Less Harsh Environments / Part Number: 96006A922
  - Description: Black oxide 18-8 stainless steel socket head cap screw 3/8" thread, 1-1/2" L
- Option 2 - More Harsh Environments / Part Number: 92185A677
  - Description: Type 316 stainless steel socket head cap screw 3/8"-24 thread, 1-1/2"L



### Hex-Head Cap Screws (3/8" bolt diameter)

Used for installations that have access to the back side of the mounting surface for securing a nut or using a bolt.

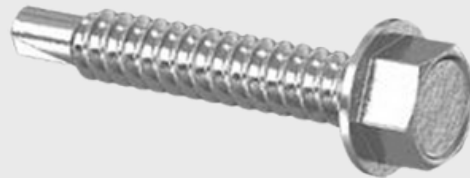
- Option 1 - Less Harsh Environments / Part Number: 92198A628
  - Description: 18-8 stainless steel hex head cap screw 3/18"-16 thread, 1-1/2" L
- Option 2 - More Harsh Environments / Part Number: 93190A367
  - Description: Type 316 stainless steel hex head cap screw 3/8"-24 thread, 1-1/2"L



### Self-Drilling Sheet-Metal Screws (1/4" diameter)

For installations with thinner mounting surfaces, where a quicker, less robust install is needed. Be sure to clean out all drill shavings!

- Part Number: 90822A630
  - Description: Stainless steel drilling screw for metal, high-strength, 1/4"-14 thread, 1-1/2"L



### ULTRA-RUGGED MOUNTING

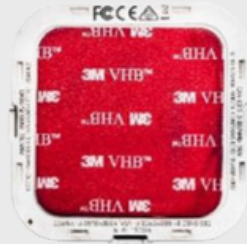
- Requires Stainless Steel Bezel and Weld-Down/Adapter Plate Accessory
  - Please contact ClearPathGPS if you are interested in this add-on.
- This applies to installations where resistance to extreme environments is required or where a welded-down and prepared surface for the device is preferred.



## VHB ADHESIVE MOUNTING

For installations that do not require a protective bezel (isolated from abuse, extreme weather, and temperatures), the device has a preinstalled pad of VHB adhesive tape that can be used to "peel and stick" to any clean surface above 50°F (10 °C).

**Note:** Using only the VHB Adhesive for mounting is not permissible when the protective bezel is installed. Protective bezels must be bolted or screw mounted to avoid serious injury/damage.



## 3. Assigning to the Asset.

1. Record the device serial number.
2. Complete our "Text-To-Activate" process to name the device according to which asset it was installed on. The number before the dash must be included (e.g., 2-3000000).
  - a. Send an SMS text message of the device serial number to (805) 695 2388 to complete the Text-To-Activate process.
  - b. Alternatively, you can name and update information about the asset that the device is installed on in the web portal under "Vehicle Admin."



## 4. Initializing the Device.

1. To finish activating the device and begin GPS reporting, remove the magnet using the pull tab while outdoors with a clear view of the sky. Removing the magnet indoors may lead the device to enter Power Save Mode.

**WARNING:** IF YOU DO NOT REMOVE THE MAGNET, THE DEVICE WILL NOT WORK!

Installation is complete!

## Need Help?

If you have any questions or need assistance, call us at (805) 979-3442 Option 2 for support.

- Phone lines are open 7:30 am - 5:30 pm (PST) Monday through Friday.
- Please leave a detailed voicemail if outside of the above hours, including company name and relevant device numbers if possible. We will follow up with you as soon as possible.
- You can also email [support@clearpathgps.com](mailto:support@clearpathgps.com) with questions or concerns.